

Excel Category 5e Unshielded Twisted Pair (UTP) Patch Leads

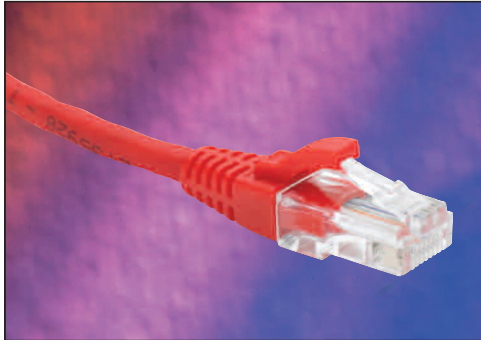


Image shows booted lead

Independently Verified

Supports Gigabit Ethernet

Booted or Unbooted style

Blade Style Strain Relief Boots

Features

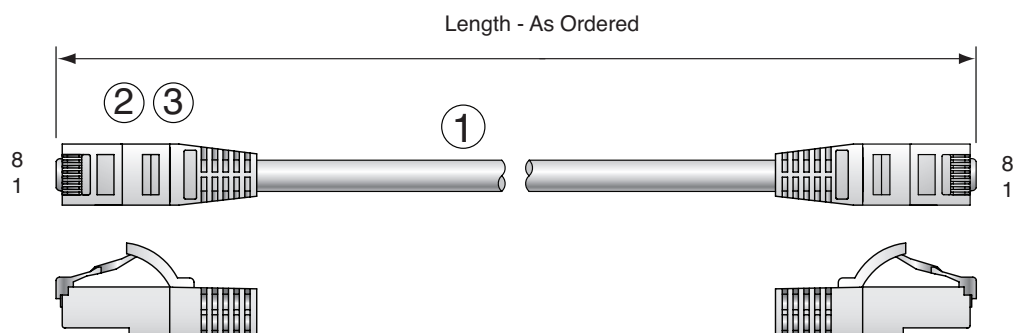
- Category 5e Compliant
- Independently Verified
- Highly Flexible
- Choice of Colour
- Individually Bagged
- Blade Style Boot with Clip Protector

Product Overview

Excel Category 5e UTP Patch Leads are manufactured, tested and independently verified to the ISO11801 Category 5 and EIA/TIA standards for enhanced performance.

Each cable consists of 8 colour coded stranded 24AWG conductors twisted together to form 4 pairs with varying lay lengths. The soft PVC outer sheath, coupled with the stranded conductors, results in a highly flexible cable. The heat resistant UL rated outer sheath is clearly printed with specification details. A choice of jacket colours enables departmental or application identification, where necessary.

Cables are available fitted with plastic strain relief boots, for applications that may require continuous patching or a degree of stress relief applied to each cable. The boot is of a slimline blade style suitable for high density patching applications, shaped to also provide protection to the latch of the connector.



- ① 4 Pair unscreened PVC cable
- ② RJ45 connector with 50 UM gold plated staggered pins
- ③ Slimline blade style strain relief boot

Performance Overview

Excel Category 5e cables are manufactured to and tested to the current Category 5 enhanced standards as defined by the EIA/TIA and ISO standards' bodies. Swept frequency tests are applied to each critical performance characteristic, such as near end cross talk (NEXT) and far end cross talk (FEXT). Both Worst Case and Power Sum Test methods are applied. Actual performance exceeds the required standard by a considerable margin ensuring sufficient headroom for even the most demanding applications.

Performance Table

Frequency (MHz)	Impedance (ohm)	SRL (dB)	Attenuation (dB/100m)	NEXT Worst Pair (dB)	NEXT Power Sum (dB)	ELFEXT Worst Pair (dB)	ELFEXT Power Sum (dB)
0.772		—	2.2	67	64	—	—
1.0		19	2.4	66	62	64	61
4.0		20.8	4.9	57	53	52	49
8.0		21.7	7.0	52	48	46	43
10.0		22	7.8	51	47	44	41
16.0	100 ± 15	22	9.9	48	44	40	37
20.0		22	11.2	46	42	38	35
25.0		21.3	12.5	45	41	36	33
31.25		20.6	14.1	43	39	34	31
62.5		18.5	20.4	39	35	28	25
100.0		17.1	26.4	36	32	24	21

System Warranty

When installed with Excel Patch Panels, Cables and Data Outlets by an accredited Excel Cabling Partner, this product is supported by a comprehensive 25 year product warranty.

Typical Applications

- 10 Base-T
- 100 Base-TX
- Token Ring
- 1000 Base T Gigabit Ethernet
- 155 Mbps ATM
- 622 Mbps ATM

Part Number Information

Part No.	Description
H00XMPLY	Excel Unbooted Category 5e Patch Lead
HB00XMPLY	Excel Booted Category 5e Patch Lead

X = Length 0.5 to 20 Metre Available

YY = Colours available: Grey, Red, Blue, Black, Green, Yellow, Violet White, Orange, Purple & Pink

Please refer to the Excel Product Guide or visit www.excelnetworking.com for full details of the available range.



Fusion Services
Stoneleigh House, 42 Stonor Park Road
Solihull, B91 1EG, GB

Tel: 01212400668

Email: ken@fusionservices.co.uk Web: www.fusionservices.co.uk