

EXCEL

Excel Optical Fibre Patch Panel – Sliding Drawer – ST Style Multimode/Singlemode



Multimode and Singlemode

Sliding Drawer Design

Choice of Port Density

Management and Fixing Kit Included

Features

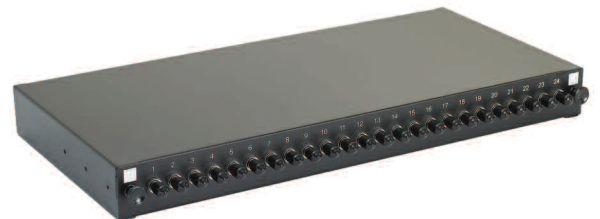
- 1u rack space design
- Upto 24 adaptors per patch panel
- Available in multimode and singlemode
- Adjustable fixing arms included
- Port identification numbers
- Management kit included
- Multiple cable entry to rear

Product Overview

The Excel range of ST patch panels are sliding drawer 'tray style' housings suitable for either direct termination or splicing of upto 24 fibres in 1u of rack space. Each panel is manufactured from high quality 2mm thick steel and finished in Black powder coated paint to provide a strong and durable unit. To the front of the patch panel the specified number of simplex adaptors are loaded from left to right. The fascia also houses the release latches for the sliding drawer. Each adaptor is fitted with a colour coded dust cap, Black for multimode, Red for singlemode. Each simplex adaptor accommodates one terminated fibre. Each panel has included within it a set of adjustable fixing arms, and a cable management pack which includes cable entry glands, cable ties, and a 24 way splice bridge.



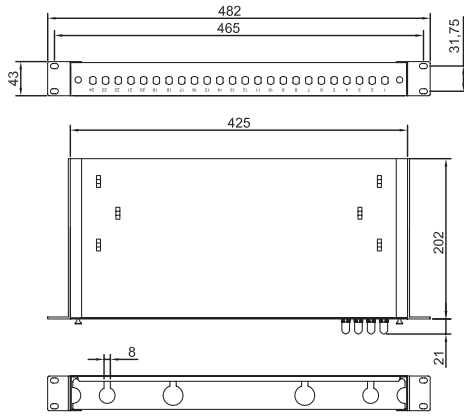
A. Sliding drawer design



B. Panels are available part or fully loaded



C. Adjustable fixing arms. clear port and panel labelling



D. Product dimensions, front, plan and rear view and fixing arms, shown in mm

Product Specification

Patch Panel		Adaptor	
Width (inc fixing arms)	482 mm	Multimode Insertion Loss	0.2dB Maximum
Depth	202mm	Singlemode Insertion Loss	0.3dB Maximum
Height	43mm	Durability	Min Life 500 Insertions
Colour	Black RAL9005	Multimode Adaptor Wavelength	850 to 1300nm
Operating Temperature	-25 to +40 Deg C	Singlemode Adaptor Wavelength	1310 to 1550nm
		Operating Temperature	-40 to +80 Deg C
		ROHS Compliant	Yes

System Warranty

When installed with Excel Fibre Cables and Components by an accredited Excel cabling partner this product is supported by a comprehensive 25 year product & applications warranty.

Part Number Information: Multimode Optical Fibre Patch Panel - Black Sliding Drawer

Part No.	Description
200-377	1u 4 Fibre ST Patch Panel - 4 Simplex Adaptors
200-378	1u 8 Fibre ST Patch Panel - 8 Simplex Adaptors
200-379	1u 12 Fibre ST Patch Panel - 12 Simplex Adaptors
200-382	1u 16 Fibre ST Patch Panel - 16 Simplex Adaptors
200-384	1u 24 Fibre ST Patch Panel - 24 Simplex Adaptors

Part Number Information: Singlemode Optical Fibre Patch Panel - Black Sliding Drawer

Part No.	Description
200-427	1u 4 Fibre ST Patch Panel - 4 Simplex Adaptors
200-428	1u 8 Fibre ST Patch Panel - 8 Simplex Adaptors
200-429	1u 12 Fibre ST Patch Panel - 12 Simplex Adaptors
200-430	1u 16 Fibre ST Patch Panel - 16 Simplex Adaptors
200-431	1u 24 Fibre ST Patch Panel - 24 Simplex Adaptors



Fusion Services
Stoneleigh House, 42 Stonor Park Road
Solihull, B91 1EG, GB

Tel: 01212400668

Email: ken@fusionservices.co.uk Web: www.fusionservices.co.uk